

Patricole Investments (Pvt) Ltd



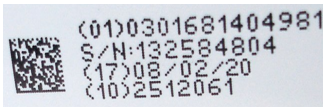
A Trusted Partner in Product Coding, Secondary Packaging,
Process Automation, Weighing and Inspection Solutions

19821 Tilcor Industrial Area Chitungwiza
Tel: 2421-30360/30758, Cell: 0772 429 278, 0712 585 051, 0718 176 453
sales@patricole.com

Product Brochure



Industrial Date Coding Machines



Carton Sealers



Turntable Stretch Wrapping Machines



Battery Strapping Tool



High Speed Fully Automatic Strapping Machines



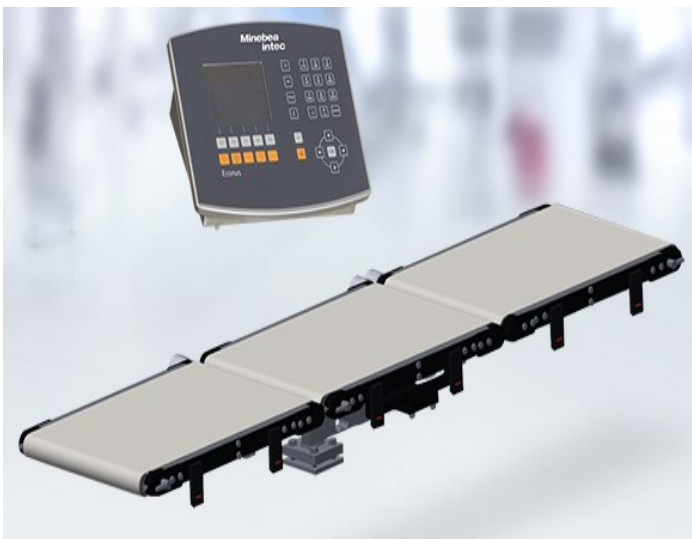
Fully Automatic Case Erectors



Checkweighers



X-Ray Machines



Weighing Kits



Platform Scales



Product Coding at its best.
We boost your productivity ...

All Leibinger printers come with a 24 months warranty.

Quality made in Germany.

Paul Leibinger GmbH & Co. KG offers integrated solutions for product numbering and coding. For several decades the company has developed and produced industrial inkjet printers and numbering machines. They are proudly made in Germany, guaranteeing the highest quality, and the worldwide distributor network ensures optimal service. The company, now in its third generation of family ownership, is headquartered in Tuttlingen in the German state of Baden-Württemberg.

Leibinger Jet One



Jet One Inkjet Printer

Entry Line continuous inkjet printer

- A coding system for any industry, product or substrate
- Sealtronic print head technology eliminates clogging and the need for frequent head cleaning
- High-performance, general purpose ink offers unrivaled performance.
- 2 line printer for basic 'BEST BEFORE & BATCH NUMBER'
- 950mls ink prints up to 120 million characters with a 5 X 5 font.
- Comes with a printing speed of 268. metres per minute.
- Character height 1.5mm to 8mm, with adjustable font height and font width.
- Low maintenance diaphragm pumps with optimized duty cycle.
- Fully automatic viscosity and pressure control which makes it unique.
- Full automatic fluid level monitoring.

Leibinger Jet 2 Neo Inkjet Printer

One marking system for all of your standard applications

- Print up to 3 lines with high precision in various fonts and languages
- The ink does not dry out thanks to the automated Seal-tronic nozzle seal
- 950mls ink prints up to 120 million characters with a 5 X 5 font.
- Comes with a printing speed of 400. metres per minute.
- Character height 1.5mm to 14mm, with adjustable font height and font width.
- Low maintenance diaphragm pumps with optimized duty cycle.
- Fully automatic viscosity and pressure control which makes it unique.
- Full automatic fluid level monitoring.
- Stainless steel housing.

Leibinger Jet 2 Neo



Leibinger Jet 3 UP



Leibinger Jet 3 UP Inkjet Printer

Quick, reliable product marking

- High-performance, general purpose ink offers unrivaled performance.
- Prints up to 5 lines and also for high speed lines, bottling and cable manufacturers.
- 950mls ink prints up to 130 million characters with a 5 X 5 font.
- Comes with a printing speed of 600 metres per minute.
- Character height 1.5mm to 16mm, with adjustable font height and font width.
- Low maintenance diaphragm pumps with optimized duty cycle.
- Fully automatic viscosity and pressure control which makes it unique.
- Full automatic fluid level monitoring.
- Stainless steel housing.



Bottling

P.E.T lines

Food packaging

Cabling

Electronics

All the above printers can print on any substrate and can be used in Food & Beverage Packaging, Cabling & Extrusion, Electronic Boards & in Pharmaceutical industries just to mention a few.

All Leibinger printers come with a 24 months warranty. 'Quality made in Germany'

Anser U2 Online Printers



Zero-maintenance

- The ink cartridge eliminates unnecessary printhead services; It is truly zero-maintenance and has drastically decreased your total cost of ownership.
- Compact Size with 3.5-inch LCD Screen, feature a larger screen to provide a better user experience, while maintaining its compact body size for hassle-free installation and easy integration.



Pocket-sized Remote Keypad
Handy and compact remote keypad with comprehensible design for easy operation.

Printing with solvent based ink

Printing with water based ink



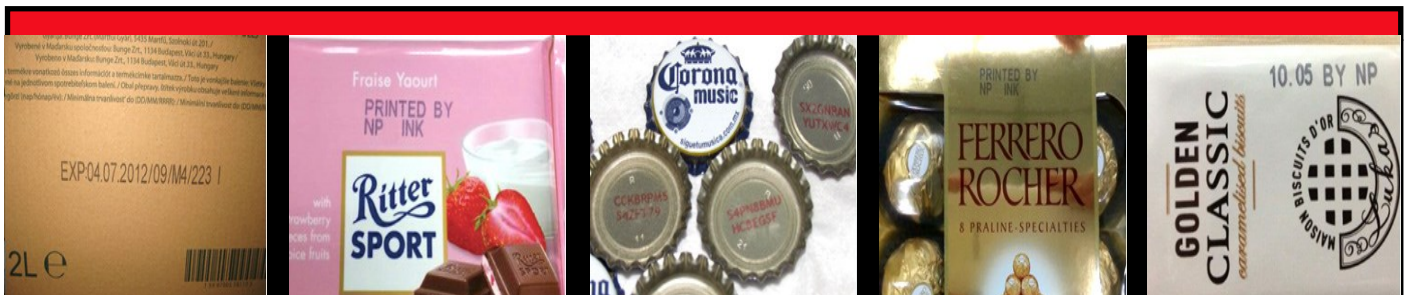
Zero-maintenance

- The ink cartridge eliminates unnecessary printhead services; It is truly zero-maintenance and has drastically decreased your total cost of ownership.
- Compact Size with 3.5-inch LCD Screen, feature a larger screen to provide a better user experience, while maintaining its compact body size for hassle-free installation and easy integration.



Handy and compact remote keypad with comprehensible design for easy operation.

Anser U2 Handheld Printer



Box printing

Food packaging

Metal printing

Food packaging

Food packaging

Anser U2 printers have a variety of inks from porous, semi porous & non porous inks which makes it ideal to print on different substrates such as Boxes, Tetrapak, P.E.T bottles, Cans & and can also be used in Extrusion & Pharmaceutical Industries as well. Anser printers can be used for both purposes namely, primary and secondary coding, all you need is the right ink for the substrate you want to print on. Anser printers are also ideal for printing high resolution bar codes on packaging .

All Anser Printers come with a 6 months warranty. 'Designed and made with pride in Taiwan'

Postek Thermal Printing Technology

Thermal printers offers two types of printing methods which are thermal transfer and direct thermal. Typical applications of thermal printers are barcode printing, shipping labels, patient and visitor identification, receipts, ticket printing, product identification, circuit board tracing, permanent identification, sample and file tracking, asset tagging, inventory identification, certification labels such as UL/CSA, laboratory specimens, cold storage and freezers and outdoor applications.



TX2r

Features

- The unique RFID antenna and pioneering RFID module ensure accurate printing and encoding, as well as enabling a 12mm minimum inlay space.
- Innovative design on label detection fixes antenna on the tear off position. Since each finished label goes through the print head, it can detect defective labels.
- Advanced design which allows printing on labels without a margin, resulting in no wasted white space, hence a total print cost savings.

G2000e

Features

- The unique RFID antenna and pioneering RFID module ensure accurate printing and encoding, as well as enabling a 12mm minimum inlay space.
- Innovative design on label detection fixes antenna on the tear off position. Since each finished label goes through the print head, it can detect defective labels.
- Advanced design which allows printing on labels without a margin, resulting in no wasted white space, hence a total print cost savings.



IQ200

Features

- Innovative TPH 7 bracket in one piece design enables massive volume printing with extreme simplicity.
- Extra anti-fraying coating on all heating units triples the TPH lifespan compared to previous models.
- Optional Wi-Fi connection allows more flexibility to connect with mobile devices.
- Standard External media Stand enlarges the media roll capacity to 9" OD
- Compatible with the majority of express billing software systems.
- All rotating parts are supported by ball bearings, thereby eliminating wear caused from direct contact with plastic.



V8i

Features

- Flexible consumable choice and budget efficient
- Independently removable ribbon design, environmentally friendly.
- Optional Bluetooth/Wi-Fi data transmitting.
- Portable and its high endurance battery, supports long hours of printing.



Marcopack Filling, Labelling And Capping Machines



MCP 4000, Bottling Machine With Caudalimeter.

This is a very versatile linear bottling machine that is suitable for various types of containers with different volumes, bottles, jars, pots etc. It is also suitable for different types of fluids as well as different industries, Chemical, Food and Beverage, Pharmaceutical.

The Caudalimeter helps control and regulate product flow within the machine so that the desired amounts are filled into the containers and the machine comes with the option of using a pneumatic screw-on capping machine.

MCP 5000 Capping Machine

This is a linear automatic capping machine whose polycarbonate coated stainless steel housing makes it suitable for all types of relevant industries and their diverse conditions. Suitable for use in Food and Beverage, Chemical and Pharmaceutical Industries.

It is characterised by a cap elevator system that makes loading fast and easy and it can cap up to 7 000 containers per hour. The machine has a number of operating configurations as well.



MCP 400T Industrial Labelling Machine

The MCP400T industrial labeller is a high-performance fast labeller for applying one or two labels and top seals on jars, adaptable to different sizes. Its labelling speed can reach 10,000 containers per hour.

- Industrial Labelling machine for jars.
- Industrial Labeller for Bottles.

The adjustments of the different parameters of the labeller are controlled by a 256 colour touch screen. It has a label breakage alarm, end of labels and calculation of average production in real time.

Industrial Weighing & Inspection Solutions

In partnership with **Minebea Intec (Germany)**. Our latest and newest portfolio of products and services is for increasing the reliability, safety and efficiency of production and packaging lines.

Checkweighers

They are used in a wide range of applications which include food and other industries, mainly for product weight verification or completeness. We offer a wide range of checkweighers which are configurable to suit your requirements or they can be custom designed.

EWK WS 30/60 kg



Premium stainless steel checkweigher that delivers maximum performance, particularly for use in production of foods, pharmaceuticals and toiletries. Special versions and software are available. They can optionally be combined with a metal detector.

- Weighing systems from 700 g to 60 kg.
- Standard deviation from 0.01 g and up.
- Max. throughput 600 items/min.
- Verifiable as legal for trade.
- 2 display and control units: 10.4" TFT or 15" TFT with touch screen.
- Special versions and software available.
- Can be optionally combined with a metal detector.
- IP 54 (Standard) IP 65 (Optional).
- USB Print option: Standard USB memory stick and standard web browsers for flexible data transfer without a network.

The checkweigher WK+ boasts fully-automatic, interruption-free weighing and sorting in a stop-and-go process for reliable and fast weight and integrity checking.

- Precise, fast measurement results thanks to static weighing and EMC technology.
- Space-saving integration and easy operation.
- Resistant to disruptive influences such as drafts– temperature fluctuations– electrostatic charge.
- Stainless steel compartment.
- Weighing system 1kg, gross weighing range up to 1000g.
- Throughput (item/min) - depends on product, permitted imprecision, ambient conditions.
- Operating height 410mm +/- 20.
- 7", IPS, TFT, colour touchscreen .
- Goods can be fed to the right or left (please specify desired direction when ordering).
- Maintenance-free 24 V EC motor with planetary gear Motor control, short-circuit proof with temperature monitor-

Checkweigher WK +



For reliable quality checking of small packaged items

- The reliable EMC technology and the checkweigher's static weighing process ensure precision and throughput.
- The checkweigher WK+ requires little space and is also easily retrofitted.
- Straightforward, automatic product teach-in ensures ease of use for the user.
- The checkweigher WK+ is impervious to drafts and temperature fluctuations. It is also available with an ioniser on request to minimise electrostatic charge.

In-line Checkweighers Minebea's Essentus

Essentus offers a model range for simple, precise weight and integrity of packaged foods and other products.

Essentus® H efficiency



- Weighing range 40 000 to 60 000g.
- Resolution 5 to 10g
- Maximum throughput (0 pcs/min) 100.
- Max belt speed 1.5m/s.
- Weighing belt width (mm) 400/500/700/900/
- Conveyor heights 400 to 1100mm (50mm increments)

Essentus® H performance



Essentus® L efficiency



- Weighing range 600 to 6000g.
- Resolution 0.1 to 1g.
- Maximum throughput (pcs/min) up to 180.
- Max belt speed 1.5m/s.
- Weighing belt width (mm) 50/100/150/200/250/300.
- Conveyor heights 400 to 1100mm (50mm increments)

Essentus® L performance



OEM Weighing Kit

The OEM weighing kit offers the most important components for checkweighing in one kit



All the components for your in-line checkweigher in one weighing kit: indicator, weighing table, feed and discharge

- Indicator as evaluation electronics, display and operator terminal
- Feed and discharge belt, consisting of tables, belts and motors
- Weighing table, consisting of SG load cell, weighing belt, motor and mounting kit
- Easy integration into your own checkweigher solutions, systems and machines
- Excellent price-performance ratio
- Precise measurement results and high process speed

Foreign Body Detectors

Minebea Intec metal detectors and X-ray inspection systems are used in production and packaging lines for detecting products that contain metal or other foreign bodies and remove these reliably from the line. Their use supports compliance with industry standards such as HACCP, IFS and BRC, protects brand reputation and avoids costly product recalls.

Vistus Freefall



The freefall metal detection system Vistus ensures the reliable inspection and removal of metallic foreign bodies from any kind of food products in powder or granule form that is transported with the use of gravity through a pipe, e.g. milk powder, wheat, nuts or cornflakes.

- Minimum installation height for easy integration into any application.
- Cost effective control of up to four search coils via one terminal.
- True In-Process Validation. This functionality guarantees correct performance testing.
- IP 65 rating (IP K69 Optional)
- 145 mm (5.7") touchscreen .
- Total of 4 relays ---> relays 1, 3 and 4 freely programmable .
- Operation: -10°C to +55°C .
- Product temperature: -30 to +55°C, up to +150°C with air cooling

Vistus metal detectors are capable of detecting both ferrous and non-ferrous metals and are specifically designed for the food industry. They can be supplied mounted on a belt or chain conveyor, allowing an easy and fast integration into your processing or packaging line.

- Sturdy and torsion free construction made of 1.4301/AISI304 stainless steel
- High quality drives: maintenance free three-phase motor with worm gear or three phase drum motor
- Maximum detection performance through optimum vibration control and metal free zone
- Available standard coil sizes: 75 x 30 mm up to 275 x 60 mm
- Extremely compact: control unit fully integrated in detection coil
- Standard IP65 protection class, IP69K optionally available for enabling high pressure water cleaning

Metal Detector Vistus



Dylight X-Ray Machine



The X-ray inspection system Dylight guarantees extremely high levels of safety for your packaged food. This true 'Plug and Play' solution combines all functions in one compact unit.

- Extremely compact design
- Plug and Play: All functions in one unit
- Takes up only one metre of space in your production line
- Complete with separator and run-off container
- Maximum product safety thanks to the highest degree of detection sensitivity
- Intuitive, time-saving operation
- Easy installation and integration into networks.
- X-ray power: 65 kV, 1 mA .
- Belt speed range: 65 kV, 1 mA .
- Detector resolution: 0.8 mm (standard) 0.4 mm (optional)
- Human interface: 15 inch touchscreen .
- Radiation safety: FDA CFR 21 part 1020,40 .

Industrial Weighing

This product line consists of a range of bench and floor scales for simple weighing operations to multiple applications such as piece counting, filling or checkweighing.

Industrial Complete Scales

Some of their major uses include the following;

- Manual dosing and filling
- Manual dispensing production of mixtures
- Part counts for material management
- Classing, classification and sorting by weight
- Checking e.g. checking content of pre-packaged



Signum

- An extremely rugged and resistant compact solution for a variety of industries
- Load ranges from 0.6kg to 65kg
- Readability of 0.001g to 10g
- IP43 or IP65 protection class



Midrics

- Load ranges from 3kg to 3 t
- Readability from 0.2g to 200g
- IP65, IP67/IP68 protection class
- 3000 d to 15 000 d resolution range



Miras Bench Platform

- A new generation industrial and bench platform scale which meets a range of requirements
- The indicator is mounted on a stand which is delivered as standard
- Load ranges between 6kg to 300kg
- Readability from 0.5g to 20g
- Resolution up to 15 000 d

Combics

- For various applications such as food, chemical, pharmaceutical, metal and electrical industries
- Readability from 0.05 to 200g
- Resolutions range from 3000 d to 340 000 d
- Load ranges from 3kg to 3 tonnes.



WK Weighing Module

Standardized and modular quality assurance system that delivers incomparable value for money. Weighing capacity up to 7 kg; belt speed up to 20 m/min (approximately 66 ft/min).

The weighing module is specialised on static weighing with a high weighing precision and a transport belt for right/left sorting to select IN SPEC from OUT OF SPEC sample. It is designed for use in or on the end of the production process

- Weighing module with feed belts for static weighing and controlling.
- For maximum product weight of 7kg
- Belt size 300 X 250 mm
- Up to 30 products/minute
- Determination of weight values and output (RS-232), sorting, 25 product memories, relay outputs options: unit counters : serial error detection

Weighing Platforms and Floor scales

A weighing platform (painted or stainless steel) for sophisticated tasks. Selectable, are four different types of indicators which can be base mounted at the front of the platform, column mounted for a raised display, or wall mounted using special brackets that are supplied separately.



Weighing Platform Combics

- 13 platform sizes
- IP67 protection rating
- 3 up to 3000kg weighing range
- Base frame is made of AISI 304 and AISI 316 Ti, stainless steel, electro polished
- Load plate alternatively available in a choice of AISI 304 stainless steel with tread plate patterned finish

Weighing Platform Midrics

- 13 platform sizes
- 4 X adjustable feet, level indicator on LCE and NCE
- Stainless steel versions are IP67/IP68 rated and therefore suitable in wet environments
- Painted versions are IP65 rated and are suitable for industrial use
- Weighing capacity range from 3kg to 3000kgs



Floor Scale IF

The flat bed floor scale IF is a highly quality, mobile and flexible weighing station which has been developed for the maximum possible ground level use in the smallest possible space. It can be used anywhere in the production process where reliable measurements and hygiene solutions are required.



- Available in various sizes, designs, weighing capacities and resolutions.
- Load ranges between 150kgs and 3000kgs
- IP65, Ip68, IP69 rated
- Resolution up to 30 000 d and up to 2 X 3 000 e in situations where verification is required
- Features strain-gauge load cells that provide especially precise resolution.

Pallet Scale IU

- Comes in 48 basic models
- Load ranges between 300kgs to 3000kgs
- Feature strain-gauge systems (load cells) that provide especially precise resolution
- Resolution from 15,000 d to 30,000 d, 1 X 3,000 e and 2 X 3,000 e
- Sheet inserts and additional strands available on request
- IP65 or Ip68 protection classes



High Resolution Scales

A digital high resolution weighing platform which is available in various sizes and designs. Connected to an isi industrial terminal, it can be certified as class II and III weighing instruments for use in legal metrology (in compliance with EC Council Directive 90/384/EEC). The scales consist of a weighing system, electronics, housing, load plate and digital interface.



Weighing Platform IS

- Feature a choice of digital interface ports
- Built-in calibration weight. ISO TEST function
- High data output speed possible, up to 50 Hz / RS 485
- Useable as intelligent sensor without display, with WinScale even in verified processes
- IP54 rated
- Resolution 1 X 3,000 e or 2 X 3,000 e (verified for legal metrology), 15 000 d 30 000 d for non verified versions

Load Cells

Minebea Intec is a leading supplier of load cells and inspection technology and also one of the few companies which, true to the claim "German Quality", also produces in Germany. Decades of experience in the field are reflected in the extensive product portfolio as well as a strong service and support for customers. The three locations in Hamburg, Bovenden and Aachen manufacture reliable products in the fields of foreign object detection and weighing technology. How does a load cell actually work?

We have many different types of load cells depending on application.

A load cell is used to determine mass and are the most important component of an electronic scale. There are many different types of load cells depending on the application which they are designed for.

Silo and Vessel weighing



Precision Compression Load Cell PR6201

- Specially designed for weighing silos, tanks and process vessels
- Load cell capacity range from 100 tonnes to 520 tonnes
- Accuracy class: 0.25 %- 0.008 %
- Proven rocker pin principle for best compensation of expansion and shear forces

Compression Load Cell Inteco

- A further development of the PR 6201 load cell
- Additional load level 60 tonnes and 75 tonnes
- Output signal of 2 mV/V
- Accuracy class from 3 tonnes



Compact Compression Load Cell PR 6212

- Corrosion resistance and precision for demanding applications
- Compact design ensures low system height and allows easy retrofitting for weighing technology
- Accuracy class 0.04 %
- Load cell capacity range from 500kgs to 10 tonnes
- High temperature version available up to 180 degrees

Tension Load Cell MP76

- For suspended process scales and is specifically designed for hopper weighing and simple dosing solutions
- Load cell capacity range from 60kgs to 5 tonnes
- Accuracy class: 0.03 % - 0.025 %



Load Cells for Bench & Floor Scales and Machines



Single Point Load Cell LC Solo

- Available in 3 different models—PR 40/PR 43/PR 47
- Ideal for integration in bench scales, counting scales and checkweighers
- Load ranges of 7.5 kgs to 500 kgs and a platform size of up to 800 mm X 800 mm

Platform Load Cell MP 55

- Specially designed for integration into beltweighers, counting scales and checkweighers.
- Completely made from stainless steel
- Available in a load range from 11 kgs to 200 kgs
- Platform sizes up to 600 mm X 600 mm



Truck Scales



Truck Scale Load Cell PR 6221 Analogue and Digital

- Its outstanding precision and long product lifetime cut service and calibration costs and help to reduce downtimes to a minimum.
- In combination with the converter Connexx®, the PR 6221 becomes a digital solution.
- Load cell can even withstand water immersion at a depth of 1.5 m for more than 10,000 hrs.
- Can withstand voltages of up to at least 1,000 kV and currents of up to 100 kA without damage.

Pendeo Truck

- Optimal solution for weigh bridges
- A digital load cell with DAT (Digital Assistance technology)
- 100 % compatible with PR 6221
- High EMC compatibility (10 V/m)
- High overload range (up to 150%)





Fully-Automatic Case Erector

The automatic case erectors with boxes storage in line are designed to fold and at a later stage to seal with adhesive tape the bottom of boxes. The machine runs at a variable output of different boxes/hour according to box dimensions. Machine adjustments are simple and fast

Case Erectors

**SR20
Semi-Automatic Case Sealer with Random Adjustment**

The semi-automatic case sealer SR20 represents the ideal solution when your packaging line processes boxes with different dimensions. Thanks to the 4-belt box control, the sealing process is always guaranteed without jams, also in the case of overfilled and empty boxes. It's the right choice for all industrial applications where it is necessary to insert a simple and reliable random box machine in the packaging line.



Carton Sealer

**OneWrap
Turntable Stretch Wrapping Machine**

The SIAT OneWrap is a semi-automatic machine for wrapping palletized loads with stretch film. It is the right solution for the most common pallet wrapping needs and applications. Designed according to the highest safety standards (anti fall device redundancy; safety stop for an immediate stop of all machine parts), OneWrap can improve customer productivity thanks to the automatic operating mode (up to 45 pallets/h). The sturdy structure allows you to load up to 2.4 tons: this will increase the service life of the machine.



Stretch Wrapper

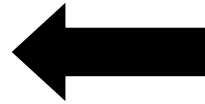
**MT40
Battery Strapping Tool for Plastic Strap**

The MT40 is the battery-operated strapping tool range by Maillis Strapping Systems for plastic straps that gives you the best solution for each industry application. MT40 is your access to the world of mobile strapping, specifically designed to offer top performance when used in light applications, such as in logistics, glass or pharmaceutical and cosmetics industries. The battery charger is included



Strapping Tool

In Partnership with Transpak Corp, Taiwan.



TP-202

TP-202 is an affordable and compact semi-auto strapping machine. It is designed for general purposes and can meet various requirements., the quality of TP-202 is highly accepted as it has managed to meet the customer requirements.

Features

- High engineering standard and simple design
- Easy operation, simple maintenance
- Hinged stainless steel top plate
- Mechanical outside tension control
- Rigid castors with brake
- Energy efficient, motor only runs as needed
- Reliable P.C. Board control

Mercury TP-702YA



Mercury Transit TP-702YA is a high-speed fully automatic side-seal strapping machine. It can be put into a wide range of applications, such as furniture, tile industries, logistics, etc. Mercury TP-702 is ideal for high capacity and efficiency automated lines.

Features

- Robust and compact strapping head
- High strapping speed up to 35 packages per minute
- Control panel with LCD display
- Free access to strap guides (*patents registered*)
- Downward tension force
- Up and down stream interlock
- Inner strap dispenser design
- Adjustable table height from 445 mm to 645 mm



H-23 Strapping Tensioner



H-44 Hercules Heavy

For PET & heavy duty PP strapping (Strapping tools)

Polyester (PET) strapping is the most rigid plastic strapping material and offers the greatest strength for heavy duty loads. Our strapping tool for PET strapping product line includes Tensioner, Sealer, Combination Tool, Battery-Powered Tool, and Strap Dispenser.

Tools in this line are also suitable working with heavy duty PP strapping.

Conveyor Belts

Conveyor belts are universally used in industrial settings and in packaging and assembling units. They can help in transportation of regular and irregularly shaped items from one point to another regardless of their weight. The items can travel in a horizontal, declined or inclined manner, depending on the type of conveyor belts used. They are placed on the surface of the conveyor and transported from one point to the other through continuous, non stop movement.

Belt conveyors are the most commonly used powered conveyors because they are the most versatile and the least expensive. Belt conveyors are also manufactured with curved sections that use tapered rollers and curved belting to convey products around a corner.

Most conveyors come with variable speed drives adjustable manually or automatically depending with your production needs and flexibility. They are many different types of conveyor belts and suitable for different types of industries, food and beverage manufacturing, automotive, pharmaceutical, extrusion, and a whole lot more. Conveyors are also custom made according to what the customer requires.

Contact us and we will find a suitable conveyor for your needs.



Mini Portable Conveyor

Mainly used as a date coding station with most customers who either have lines which are fully manual or semi automated. Can be made in any size depending on weight of product you want to code and it comes with adjustable guides on the sides for proper positioning of product. Mainly used for P.E.T bottles, jars and any ordinary glass or plastic bottles. Also comes with variable speed drive.

Mini Portable Conveyor

This mini conveyor is also used as a date coding station as well with most customers who either have lines which are fully manual or semi automated. Specifically for use in pre-coding packaging before packing is done. For example sanitary pads, rice, sugar, salt and any other plastic packaging, Also comes with variable speed drive.



Wire Mesh belt conveyor

As the name suggests, this conveyor has mesh that will facilitate air ventilation. Hence, this type of belt conveyor is ideal for transporting hot and cold items or components that cannot be handled using standard duck or PVC belts. The wire mesh is placed on roller or longitudinal runners and then it is covered with a thick plastic. In addition, there are toothed pulleys to clasp onto the wire mesh belt.





Metal “Piano Hinge” Conveyor

This is a hinged type belt conveyor made from steel. It is perfect for transporting hot and oily components from a punch press and forging machines. This type of belt conveyor can be horizontal, inclined into an ‘S’ shape or even level.

Incline and Decline Conveyor

This type of conveyor is similar to a horizontal belt conveyor, but has an additional component. It comes with a single or double nose over and sometimes it also has a feeder portion. Typically, this type of conveyor has a rough surface on the belt during incline or decline rather than making use of a smooth-surfaced belt. This offers more traction to the items placed on the conveyor and prevents them from rolling backwards or forwards.

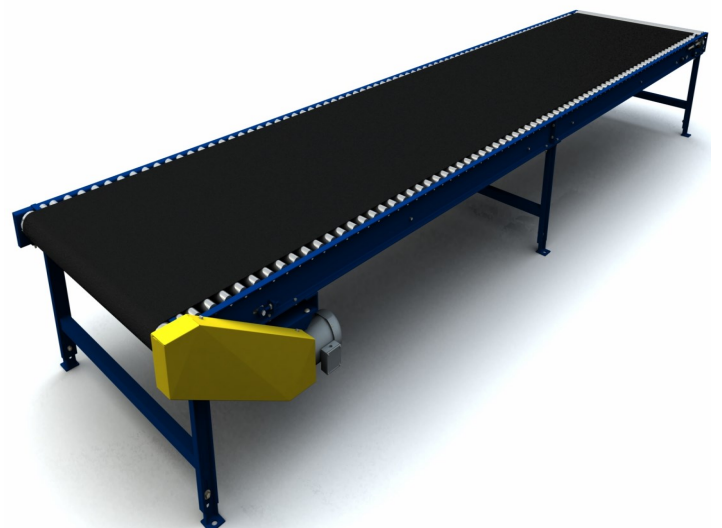


Portable Conveyor

This conveyor comes with caster wheels allowing it to be rolled from one place to another. There are different types of portable conveyors and most companies can find one to suit their needs. There are even portable gravity conveyors that can be extended depending on the customer’s needs.

Roller Bed Conveyor

As the name suggests, in this type of belt conveyor, the surface for the belt comprises of rollers. The rollers are selected based on the load of the items to be transported and the required speed of the belt. Usually there are two rollers in a short belt conveyor. However, the number of rollers may increase if the distance between the two ends of the belt conveyor is more. Typically, these belt conveyors are used when the items are loaded onto it with gravity rather than manually. Manual loading can cause mechanical shock to the rollers, resulting in damage



Vito High and Low Pressure Industrial Compressors



This is a brand manufactured by **SIAD Machine Impianti**, an Italian company and the compressors supply pressurized air for blow moulding of PET and PLA bottles.

Oil free and moistureless air supply is a pre-requisite for the efficiency of blow-moulding machines and VITO compressors offer the best solution. The characteristics of the compressors are as follows:

- Efficiency.
- Safety and reliability.
- Flexibility and they can be adjusted to suit different pressure ranges.
- Compliance to global industrial standards.
- Low maintenance cost.
- Sustainability.

The pressure range for high pressure compressors is $100\text{m}^3/\text{h}$ - $6000\text{m}^3/\text{h}$ and the low pressure range is $600\text{m}^3/\text{h}$ - $2100\text{m}^3/\text{h}$.

The compressors are applicable to various industries which include Food and Beverage, Cosmetic, Chemical and Pharmaceutical Industry.

Power Perfectors



These are products from iESCo. (Intelligent Energy Saving Company), UK's leading provider of the Voltage Power Optimization Technology, VPO. The power perfectors regulate and condition electrical power supply to offer a solution to the high and increasingly variable voltage supply together with diminishing power supply quality and rising energy prices.

Why optimize your power supply?

Did you know that you could be wasting up to 20% of the energy you pay for? Around 905 of consumers are wasting energy, the power supplied by the distribution network is not at the optimum voltage, so your equipment is being over-supplied with subtle but significant consequences. In turn, the equipment performs less efficiently when exposed to such excessive voltages and poor power quality, thus compromising its lifespan.

Our Voltage power optimization Technology power perfectors can correct that and bring efficiency to your operations at reasonable costs.

The benefits of power perfectors.

They help save electrical energy, the average savings range between 6 to 12% of energy spent.

Power factor improvement.

The power conditioning reduces reactive power by up to 40%.

Reduction in harmonics.

The power perfecter delivers significant reduction to the 3rd, 5th and 7th order harmonics. It also reduces current flowing on the neutral by attenuating triple-n harmonics and helps balance the 3 phases supplied to your site.

Protection against common transients.

These voltage spikes can have a devastating effect on sensitive electronic equipment.

Make Patricole your partner in energy management and you will see the benefits.

Manual Tools

Meto gun for manual coding



Evo Consecutive Labeller

Italy's third generation automatic hop code machine , with dust cover to prevent dust from entering. Changing the labels is more convenient. Lace or straight edge can be equipped with paper. Light, fast, greatly improve work efficiency. The shell is made of special high strength material, more robust and resistant to fall

Manual Tape Dispenser



- For manual sealing
- Suitable for tapes of 50mm, 75mm, 100mm width
- Available in plastic or steel frame.

Process Automation Spares

Sensors



Solid State Relays



Rotary Encoders



Air Service Units, Actuators & Air Cylinders, Fittings & Tubes



We also order spares as per your specifications and requirements.



Pressure Gauges

These work through a bourdon tube, which is a mechanical device that is fitted inside them. The tube receives system pressure and converts it into mechanical energy. This energy in turn moves a dial in the gauge, displaying the current pressure value.

Solenoid Valves

These are electro-mechanical valves whose function involves either the opening or closing of an orifice inside the valve body. The opening/closing either allows or prevents flow through the valve. This happens when the coil is energised or de-energised.



Process Controllers

Controllers in their varied types, are the brains of a control system, they basically perform three functions which can be summarised as; measurement, comparison and adjustment. Through process sensors/transducers they measure the actual process values in a system (temperature, flow etc.) and compare with the set/expected values. If the actual values do not match the set/expected values they adjust them through the relevant devices so that any differences are cancelled out. This helps to keep process parameters at the expected values or within acceptable ranges.

Paperless Recorders

One of the many variations in process control equipment, they are used as data loggers for the capturing, monitoring and control of process parameters and recording measurements over time. They have features that enable the stored data to be transferred to a PC via a usb stick or flash drive. Alternatively, the data can be downloaded directly to a PC using serial interface protocols.



Process Transmitters

These process control field devices receive input from process sensors/transducers which are in direct contact with the process and then convert the signal into a format that can be read and interpreted by control devices like recorders and PLCs using transmission protocols.

Consumables

Continuous Inkjet Printer Consumables



- Variety of colored inks and soft pigmented inks
- Fast drying solvent ink
- MEK– free, ketone-free and alcohol based inks
- Temperature-resistant inks
- Pigmented contrast inks (Opaque inks)
- Security, color changing, sterilization, fluorescent, adhesive and alcohol-resistant inks.
- Food grade ink and food packaging inks
- Removable inks
- Inks certified for aviation, approved by leading aircraft manufacturers
- Halogen-free inks
- Inks for eggshells
- PVC inks (vinyl inks/transfer-resistant inks)
- UV-curable inks
- Invisible UV-curable security inks (only visible under UV light)
- UV color inks
- Customized inks

Thermal Ribbons

- Available in various sizes
- Supplied as per your specifications
- Ink inside or ink outside



Industrial Labels in various sizes

Industrial Labels in various sizes



Meto Gun Consumables

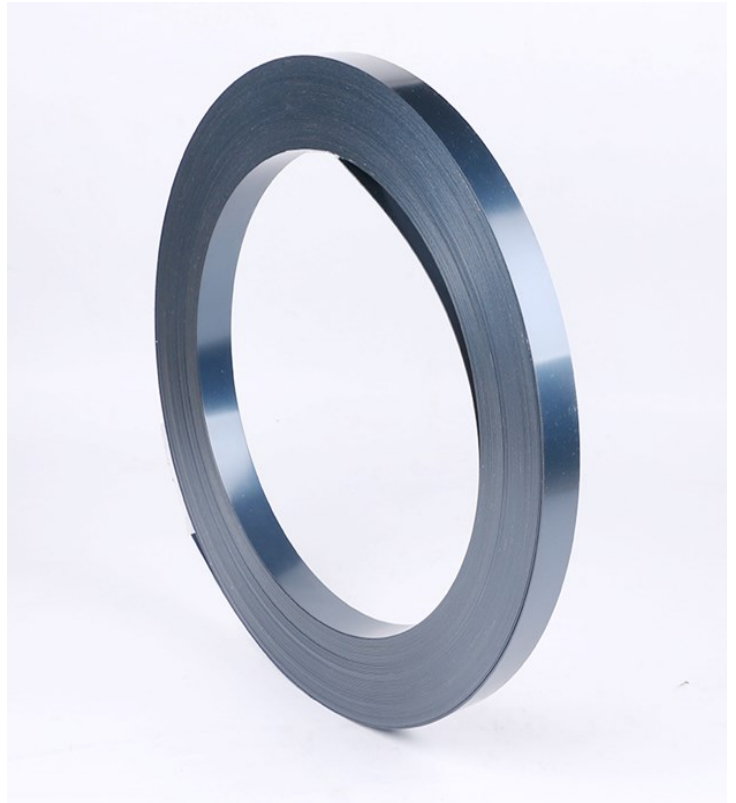


- 1 to 2 line labels, both plain and best before pre-printed
- 1000 stickers per roll



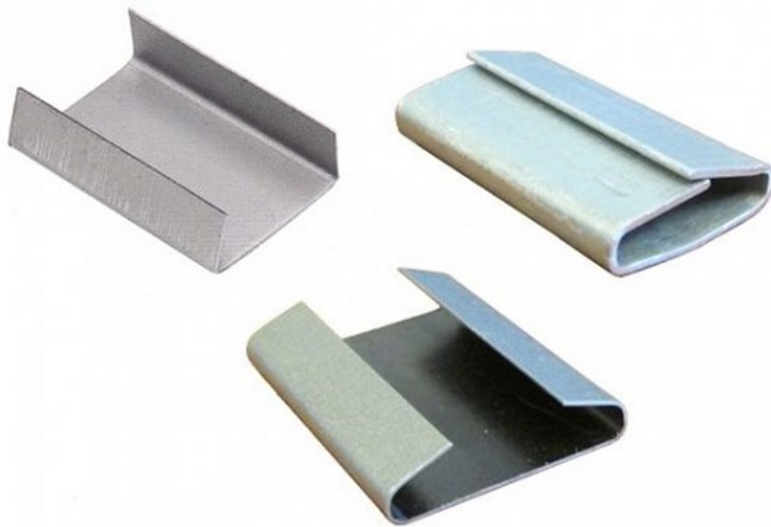
Ink rollers are also available

Strapping Consumables



P.E.T /Steel/Poliflex Polypropylene Strap

- Each is developed to meet specific customer needs and requirements
- Offer high level of load security at the lowest strapping cost per package/pallet.
- Available in range of widths, thickness, colours, finishes



Steel Strap Seals

A variety is available for single and double notch tool

Hand/Standard/Power/Optimax Film

- A range of quality stretch films designed to meet a variety of applications and requirements
- Our films are engineered to minimize packaging costs while retaining high quality wrapping

Hand Film

- Hand film is for manual wrapping of pallet loads
- Ideal for distribution industries

Standard Film

- Standard film has a pre-stretch capability up to 180% and suitable for load with flat sides or sharp edges and product overhanging pallet
- Ideal for distribution industries

Power Film

- Power film is a machine film with a pre-stretch of up to 300%
- Ideal for food and beverage, glass, construction, metal, corrugated, timber, tissue industries

Optimax Film

- Optimax film is for ultimate performance, optimization and pallet load security
- Ideal for food and beverage, distribution, corrugated and tissue

Stretch Film



Packaging Tapes



Transparent/Altezze/Buffer Tapes

Available in 100m, 1000m sizes length

PATRICOLE INVESTMENTS IN PARTNESHIP WITH THESE REPUTABLE BRANDS

www.patricole.com



LEIBINGER GERMANY
www.leibinger-group.com



ANSER U2 TAIWAN
www.anser-u2.com



SIAT MAILIS ITALY
www.siat.com



TRANSPAK TAIWAN
www.transpakcorp.com



AUTONICS SOUTH KOREA
www.autonics.com



SMC PNEUMATICS JAPAN
www.smcworld.com



ANLY TAIWAN
www.anly.com.tw



ASHCROFT USA
www.ashcroft.com



MINEBEA INTEC GERMANY
www.minebea-intec.com

FOLLOW US ON



Patricole Investments-(Pvt) Ltd



@Patricole Zim



Patricole Investments

www.patricole.com